

Sandia

PRODUCTS

Your Ultimate Choice in
Profitable Cleaning Performance!

INDUSTRY LEADERS

in High Performance Cleaning Equipment!



www.E714.com

When supplies are running low...
call

MOBILE JANITORIAL SUPPLY!
714-779-2640



JANITORIAL • PACKAGING • SAFETY • FOODSERVICE
mobilejanitorialsupply.com

**CALL US TODAY IF YOU HAVE ANY QUESTIONS,
OR WOULD LIKE TO PLACE AN ORDER!**

712 S Richfield Rd. Placentia CA 92870

Phone: 714-779-2640 • Fax: 714-779-7789 • www.E714.com



Manufactured with
Pride in the U.S.A.

PARTS AND ACCESSORIES CATALOG

CONTENTS

Sniper 12-Gallon Extractor Accessories.....	3
Sniper 12-Gallon Hard Surface Extractor Accessories.....	3
Sniper 24-Gallon Flood Pumper Accessories and Replacement Parts	3
Sniper 6-Gallon Extractor Accessories	4
Sniper 6-Gallon and 12-Gallon Extractor Replacement Parts	4
2-Gallon and 3-Gallon Spot Extractor Accessories.....	8
2-Gallon and 3-Gallon Spot Extractor Replacement Parts	9
6-Quart and 10-Quart Backpack and Hip Vacuum Replacement Bags.....	10
6-Quart and 10-Quart Backpack and Hip Vacuum Replacement Accessories/Parts.....	10
6-Quart and 10-Quart Backpack and Hip Vacuum Sidewinder Wands and Tools.....	14
FORCE 14 Upright Vacuum Replacement Parts and Bags	15
Solution Tank Replacement Parts Kit	15



Sniper 12-Gallon Extractor Accessories



10-0501
4 in. Stainless Steel
Hand Tool, Required
for Machines with
Heat



10-0512
Stainless Steel Crevice
Tool



10-0861
Stainless Steel Dual
Jet 12 in. S-Bend
Wand



10-0863
12 in. Titanium Dual
Jet Wand with Teflon
Glides



80-0500
25 ft. Vacuum and
Solution Hoses and
Stainless Steel Dual
Jet Wand Kit



80-0502
25 ft. Solution Hose
Assembly with 1/4 in.
Female and Male
Quick Disconnects



80-0503
25 ft. Vacuum Hose
with Cuffs Assembly



80-0510
Black Mesh Utility
Bag

Sniper 12-Gallon Hard Surface Extractor Accessories



10-0864
15 in. Hard Surface
Turbo Brush Tool



10-0874
7 in. Hard Surface
Turbo Brush Tool (5 in.
Inside Diameter)

Sniper 24-Gallon Flood Pumper Accessories and Replacement Parts



10-0029
Aluminum Vac Wand,
2 Piece, 56 in. 2-Bend
Wand with 3 Piece
Head Kit



10-0170
14 in. Squeegee Floor
Tool



10-0800
Pump for Flood
Pumper



10-0825-COM
Motor for Flood
Pumper with Gasket

Sniper 6-Gallon Extractor Accessories



10-0501

4 in. Stainless Steel Hand Tool, Required for Machines with Heat



10-0502

Jet for 4 in. Stainless Steel Hand Tool



10-0504

Valve for 4 in. Stainless Steel Hand Tool



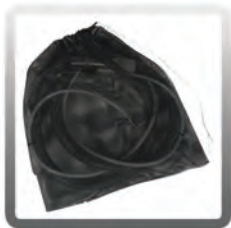
10-0512

Stainless Steel Crevice Tool



50-1008-A

15 ft. Vacuum Hose Assembly



80-0510

Black Mesh Utility Bag



80-8007-A

15 ft. Solution Hose Assembly with 1/4 in. Female and Male Quick Disconnects



80-8008

12 in. Stainless Steel Single Jet Single Bend Wand



80-8009-A

Stainless Steel Single Jet Single Bend Wand with 12 in. Head, 15 ft. Vacuum and Solution Hoses



80-8010

4 in. Stainless Steel Hand Tool with 15 ft. Vacuum and Solution Hoses

Sniper 6-Gallon and 12-Gallon Extractor Replacement Parts



10-0803

On/Off Switch for Extractor



10-0803-H

Lighted On/Off Heater Switch for Extractor



10-0804

6 in. Hatch Cover for Extractor with T-Handle



10-0804-A

Gasket for Hatch Cover



10-0805

Dump Valve



10-0807

10 in. Wheel for Extractor



10-0808

Caster for Extractor



10-0810-COM

3-Stage Extractor Motor with Gasket, 120 V, 5.7 in. Tangential Bypass, UL/CSA Certified



10-0811-66-COM

2-Stage 6.6 in. Extractor Motor, 120 V



10-0811-COM

2-Stage Extractor Motor with Gasket, 120 V, 5.7 in. Tangential Bypass, UL/CSA Certified

Sniper 6-Gallon and 12-Gallon Extractor Replacement Parts *Continued*



10-0812
100 psi Pump



10-0814
Sensor for Heater



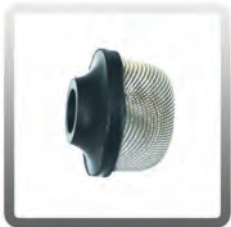
10-0814-B
Manual Sensor for Heater



10-0822
Intake/Exhaust Grate



10-0836
19 in. Axel for Extractor
10-0820
End Cap for Axel



10-0845
1/4 in. Strainer



10-0860
25 ft. Extension Cord for
Extractors



10-0868
1/4 in. Female Quick
Disconnect



10-0869
200 psi Pump



10-0869-R-EG
200 psi Pump Regulator



10-0870
1/4 in. Male Quick
Disconnect



10-0910-2-1
2000 Watt Heater for
100 psi Extractors



10-0910-2-2
2000 Watt Heater for
200 psi Extractors



10-0910-2-3
2000 Watt Heater for
300 psi Extractors



10-0910-2-5
2000 Watt Heater for
500 psi Extractors



10-0920
Dual Rod Heat
Exchanger Tube for
Extractor



10-1030-S2
2-Stage Motor Gasket



10-1030-S3
3-Stage Motor Gasket



10-1500-A
1000 Watt Heater
Element



10-1500-B
600 Watt Heater Element

Sniper 6-Gallon and 12-Gallon Extractor Replacement Parts *Continued*



80-0003-C

28" Black/Gray Hose
Hose Assembly with Cuffs
and Steel-Type Inserts



80-0007

#1 Jet for Extractor Wand
(10-0861)



80-0007-A

Tip for #1 Jet for Extractor
Wand (10-0861)



80-0007-B

Tip for #2 Jet for Extractor
Wand (10-0861)



80-0007-D

Tip for #3 Jet for Extractor
Wand (10-0861)



80-0012

Shut-Off Assembly



80-0016

500 psi Pump



80-0016-RA

500 psi Pump Rebuild
Kit A Plunger and Seals



80-0016-RB

500 psi Pump Rebuild
Kit B Valve and Seals



80-0016-RC

500 psi Pump Rebuild
Kit C Bearing



80-0016-REG

500 psi Pump Regulator



80-0059

500 psi Extractor Gauge



80-0059-2

200 psi Extractor Gauge



80-0059-3

300 psi Extractor Gauge



80-0059-4

1200 psi Extractor Gauge



80-0080

300 psi Pump for
Extractor



80-0080-RA

300 psi Pump Rebuild
Kit A Plunger and Seals



80-0080-RB

300 psi Pump Rebuild
Kit B Valve and Seals



80-0080-RC

300 psi Pump Rebuild
Kit C Bearing



80-0080-REG

300 psi Pump Regulator

Sniper 6-Gallon and 12-Gallon Extractor Replacement Parts *Continued*



80-0101-M

1/4 in. Male Brass Check Valve



80-0112

1200 psi Pump Kit for 1200 psi Extractor Only



80-0112-RA

1200 psi Pump Rebuild Kit A Plunger and Seals



80-0112-RB

1200 psi Pump Rebuild Kit B Valve and Seals



80-0112-RC

1200 psi Pump Rebuild Kit C Bearing



80-0112-UN

1200 psi Unloader Valve Regulator



80-0505

Valve for Single and Dual Jet Extractor Wands



80-0505-A

Valve Repair Kit for Valve on Single and Dual Jet Wands



80-0800

800 psi Pump



T-A001

Cooling Ducting

2-Gallon and 3-Gallon Spot Extractor Accessories



10-0401-E

4 in. Clear View Plastic Hand Tool with External 7 ft. Hoses for 3-Gallon Spotter WITHOUT Heat



10-0401-I

4 in. Clear View Plastic Hand Tool with Internal 7 ft. Hoses for 3-Gallon Spotter WITHOUT Heat



10-0450

7 ft. Vacuum and Solution Hoses (Internal)



10-0450-A

7 ft. Vacuum and Solution Hoses (External)



10-0455

Stainless Steel Wand, 9 in. Head



10-0500-E

4 in. Clear View Plastic Hand Tool with Jet Set for External hoses for Machines WITHOUT Heat



10-0500-I

4 in. Clear View Plastic Hand Tool with Jet Set for Internal hoses for Machines WITHOUT Heat



10-0501

4 in. Stainless Steel Hand Tool, for use with Machines with or without Heat



10-0503

4 in. Stainless Steel Hand Tool and 7 ft. Vacuum and Solution Hoses



10-0508

4 in. Stainless Steel Hand Tool with Clear View Head



10-0512

Stainless Steel Crevice Tool



80-8010

4 in. Stainless Steel Hand Tool and 15 ft. Vacuum and Solution Hoses



80-8011

15 ft. Vacuum and Solution Hoses with 1-1/4 in. Straight Cuffs, NO Hand Tool

2-Gallon and 3-Gallon Spot Extractor Replacement Parts



10-0300

55 psi Pump for 2-Gallon and 3-Gallon Spotters



10-0302

5 in. Hatch Cover for 2-Gallon Spotter



10-0302-A

5 in. Gasket for Hatch Cover for 2-Gallon and 3-Gallon Spotters



10-0303

Spotter Wheel

10-0387

Bolt for Spotter Wheel
Spotter Wheel



10-0304

Spotter Cap and Float Assembly for 3-Gallon Spotter and Recovery Tank Hatch for 2-Gallon Spotter



10-0354-COM

3-Gallon Spotter Motor with Gasket



10-0366-COM

3-Gallon Super Spotter Motor with Gasket



10-0447-COM

2-Gallon Spotter Motor with Gasket



10-0499-A

Tee Jet for 4 in. Clear View Upholstery Hand Tool



10-0504

Valve for Stainless Steel Hand Tool for Part Number 10-0501



10-0504-A

Repair Kit for 4 in. Stainless Steel Hand Tool



10-0900

Spotter Heater Tube



10-0910-SP

600 Watt Heater for Spotter



10-0507

8 in. Black Hose for 4 in. Stainless Steel Hand Tool



10-1030

Spotter Motor Gasket for 2-Gallon and 3-Gallon Spotters

6-Quart and 10-Quart Backpack and Hip Vacuum Replacement Bags



10-0006

10-Quart Vacuum
Micro-Lined Filter Bag
(10 Pack)



10-0006-HEPA

10-Quart Vacuum HEPA
Micro-Lined Filter Bag
(10 Pack)



10-0007-6

6-Quart Vacuum Cloth
Filter Bag with L-Style
Grommet



10-0007-10

10-Quart Vacuum Cloth
Filter Bag with L-Style
Grommet



10-0197

6-Quart Vacuum Micro-
Lined Filter Bag (10 Pack)



10-0197-HEPA

6-Quart HEPA Micro-
Lined Filter Bag
(10 Pack)

6 and 10-Quart Backpack and Hip Vacuum Accessories and Replacement Parts



10-0002-A

Complete Vacuum Lid
for 10-Quart Raven
Backpack Vacuums
(NO Hose)



10-0002-B

Complete Vacuum Lid
with Hose and Cuff
for 10-Quart Raven
Backpack



10-0002-6-A

Complete 6-Quart
Vacuum Lid (NO Hose)



10-0008-B

Complete Dome Filter
with Bag Support



10-0012-COM

XP-3 WHISPER Raven
2-Stage Motor with
Gasket



10-0013-COM

Super Raven 1-Stage
Motor with Gasket



10-0018

Sound Dampening
Band



10-0019

10-Qt. Dual Cell Noise Filter

10-0019-6

6-Qt. Dual Cell Noise Filter



10-0020

Cushioned Back Pad



10-0021

Shoulder and Waist Belt

6 and 10-Quart Backpack and Hip Vacuum Accessories/Parts *Continued*



10-0021-BA

Deluxe Padded Waist Belt for Backpacks Only (not for Hip Vacuums)



10-0022

Screw for Shoulder and Waist Belt



10-0023

Washer for Shoulder and Waist Belt



10-0028

50 ft. Electrical Cord



10-0029

Aluminum Vac Wand, 2-Piece, 56 in. 2-Bend Wand with 3 Piece Head Kit



10-0024-COM

Complete 4 in. Vacuum Hose with Cuff (1-1/2 in. Diameter)



10-0024-6-COM

Complete 4 ft. Vac Hose for 6-Quart Backpack with (1) Swivel Cuff and (1) Straight Cuff



10-0025

On/Off Switch



10-0026-A

17 in. Complete Pigtail Cord with Strain Relief Nut and Electrical Connectors



10-0031

5 in. Upholstery Tool



10-0032

14 in. Scalloped Floor Tool



10-0033

17 in. Crevice Tool



10-0034

Standard 5-Piece Tool Kit for 1-1/2 in. Wand



10-0036

Complete 4 in. Super Flex Vacuum Hose with Cuffs, 1-1/2 in. Diameter



10-0037

3 in. Round Dust Brush



10-0042

Aviation Backpack 400 Hz Motor Brush Kit (Set of 2)



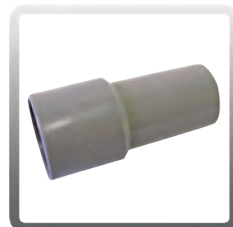
10-0055-L

Long Screws for Top of Hipster Waist Belt



10-0055-S

Short Screws for Bottom of Hipster Waist Belt



10-0155

Straight Hose Cuff



10-0163

Power Head Kit, Includes Wand, Electrical Fittings and Vacuum Head

6 and 10-Quart Backpack and Hip Vacuum Accessories/Parts *Continued*



10-0165
Copper Ring for Wand Head



10-0170
14 in. Squeegee Floor Tool



10-0170-A
Replacement Blades for 14 in. Squeegee Tool (4 Pack)



10-0173
14 in. Felt Floor Tool



10-0173-A
Replacement Blades for 14 in. Felt Floor Tool



10-0175
16 in. Carpet Tool with Adjustable Brush



10-0175-A
Replacement Brushes for 16 in. Carpet Tool with Adjustable Brush



10-0176
1-4 in. Overhead Pipe Cleaner Wand Attachment



10-0176-A
4-8 in. Overhead Pipe Cleaner Wand Attachment



10-0177
4 in. Car Utility Tool



10-0181
28 in. Crevice Tool



10-0183
14 in. Floor Tool with Nylon Brush



10-0183-A
14 in. Replacement Brush for Nylon Floor Tool



10-0195
Swivel Cuff for 1-1/2 in. Diameter Hose



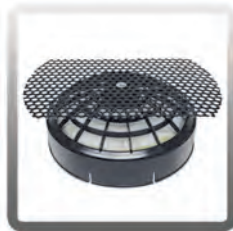
10-0199
Vacuum Motor Gasket with PSA



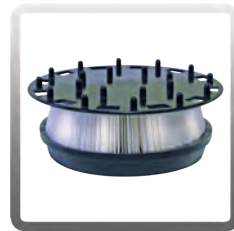
10-0217
Washer for Hipster Waist Belt for 6-Quart and Hip Vacuums



10-0219-H
Complete HEPA Filter with Bag Support for 6-Quart HEPA Hipster



10-0219-6
Complete HEPA Filter with Bag Support for 6-Quart HEPA Backpack

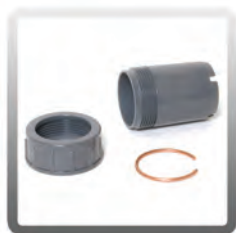


10-0219-10
Complete HEPA Filter with Bag Support for 10-Quart HEPA Backpack



10-0220
5 in. Aluminum Dust Brush

6 and 10-Quart Backpack and Hip Vacuum Accessories/Parts *Continued*



10-0223-B

3-Piece Head Kit for Wand



10-0224

1-Piece, 2-Bend Aluminum Wand



10-0340

14 in. Scalloped Felt Floor Tool



10-0340-A

14 in. Felt Replacement Blades for 14 in. Scalloped Felt Floor Tool



10-0342

60 in. Aluminum Vac Wand Extension



10-0345

11 in. Crevice Tool



10-0346-COM

D.P. Hipster Motor with Gasket for 6-Quart Backpack Vacuum and Hipster Hip Vacuum



10-0347

11 in. Carpet Tool with Adjustable Brush



10-0347-A

Replacement Brush for 11 in. Carpet Tool with Adjustable Brush



10-0372

Waist Belt Clip



10-0409

Backpack Waist Belt Extension (Extends up to 12 in.)



10-0421

Hipster Waist Belt for 6-Quart Hipster Hip Vacuum



10-0422

Power Head Connector Kit



10-0430

15 in. Smooth Glide Floor Tool



10-0438

14 in. Slotted Horse Hair Brush



10-0440

14 in. Quick Clean Paddle



10-0441

14 in. Horse Hair Brush



10-0441-A

Replacement Brushes for 14 in. Horse Hair Brush



10-0453

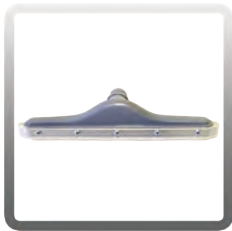
54 in. Aluminum Vac Wand Extension



10-0454

36 in. Aluminum Vac Wand Extension

6 and 10-Quart Backpack and Hip Vacuum Accessories/Parts *Continued*



10-0488
14 in. White Blade
Squeegee for Floor Tool



10-0472
14 in. Easy Glide Floor
Tool



10-0489
White Replacement
Blades for 14 in.
Squeegee Tool (4 Pack)



10-0497
Hipster Waist Belt
Extension (Extends up to
12 in.)



10-1333
Black Super Motor
Brushes, Single Stage
(Set of 2)



10-1333-O
Orange XP-3 Whisper
Motor Brushes, 2-Stage
(Set of 2)



10-2300
Turbo Brush Kit, Includes
Telescopic Wand, 1-1/2 in.
to 1-1/4 in. Hose Handle



10-2507
1-1/4 in. Turbo Brush

6 and 10-Quart Backpack and Hip Vacuum Sidewinder Wands and Tools



10-0184
59 in. 2-Piece Sidewinder Wand



10-0184-1
59 in. 1-Piece Sidewinder Wand



10-0184-EXT
59 in. 1-Piece Sidewinder Extension
Wand



10-0188
32 in. Sidewinder Half Curve Adapter
Pipe Cleaner Wand



10-0185
18 in. Sidewinder Carpet Tool



10-0185-15
15 in. Sidewinder Carpet Tool



10-0185-8
8 in. Sidewinder Carpet Tool



10-0185-F
18 in. Sidewinder Felt Floor Tool



10-0185-15-F
15 in. Sidewinder Felt Floor Tool



10-0185-FS
18 in. Sidewinder Scalloped Felt Floor
Tool



10-0185-15-FS
15 in. Sidewinder Scalloped Felt Floor
Tool



10-0185-H
18 in. Sidewinder Horsehair Floor Tool



10-0185-15-H
15 in. Sidewinder Horsehair Floor Tool



10-0185-8-H
8 in. Sidewinder Horsehair Dusting
Brush

Sidewinder Wands and Tools *Continued*



10-0185-N

18 in. Sidewinder Nylon Floor Tool

10-0185-15-N

15 in. Sidewinder Nylon Floor Tool



10-0185-S

18 in. Sidewinder Squeegee Tool

FORCE 14 Upright Vacuum Replacement Parts and Bags



60-0006

Round Filter
Replacement



60-0007

HEPA Filter Replacement



60-1001

FORCE 14 Replacement
Paper Bags (10 Pack)



60-1001-HEPA

FORCE 14 HEPA
Replacement Paper
Bags (10 Pack)

Solution Tank Replacement Parts Kit



10-0056

Replacement Parts Kit
for Solution Tank